

Instructions for using the “EPW to BIN” converter program

Download eQUEST Program

Open <http://doe2.com/equest/index.html>
Click on [Download a complete eQUEST version 3.64 installation](#)
RUN or SAVE and RUN
Save in folder **C:\Program Files (x86)** or **C:\Program Files**
Creates folder **C:\Program Files (x86)\eQUEST 3-64**

Download Weather Processor

Open http://doe2.com/index_Wth.html#eQ_WthProc
Right-Click on [eQ_WthProc](#)
Click on Save Target As
Save in Folder **C:\Program Files (x86)\eQUEST 3-64**
Creates Zipped folder **eQ_WthProc_EPWtoDOE2bin.zip**

Click on Zipped Folder and Extract All Files

This creates a folder **eQ_WthProc_EPWtoDOE2bin**
With Sub-Folder **EPW**
And Sub-Folders (1) **Processor** (2) **Source Files**
Sample File in Folder **Source Files**
Sample File Name **CHN_Beijing_SWERA.epw**

Delete *.INI file to use existing folders

Open Folder **Processor**
Delete File **eQ_WthProc.INI**

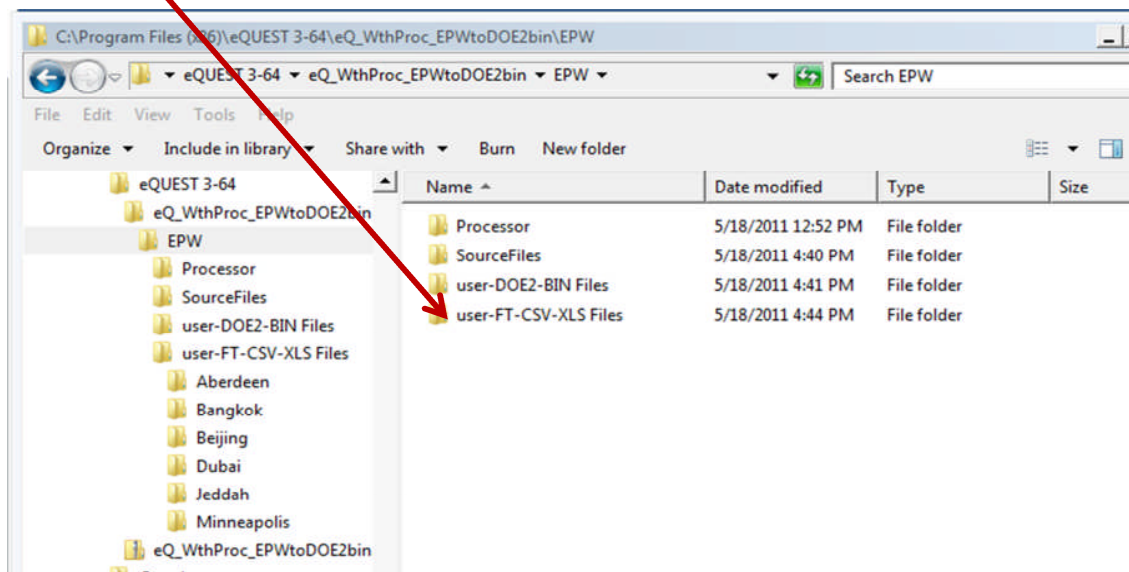
Create Sub-Folders for saving files created by PROGRAM

In **C:\Program Files (x86)\eQUEST 3-64\ eQ_WthProc_EPWtoDOE2bin\ EPW**

Create sub-folders for saving file types: (1) *.BIN (2) *.FT , *.CSV , *.XLS

Examples (1) **user-DOE2-BIN** (2) **user-FT-CSV-XLS**

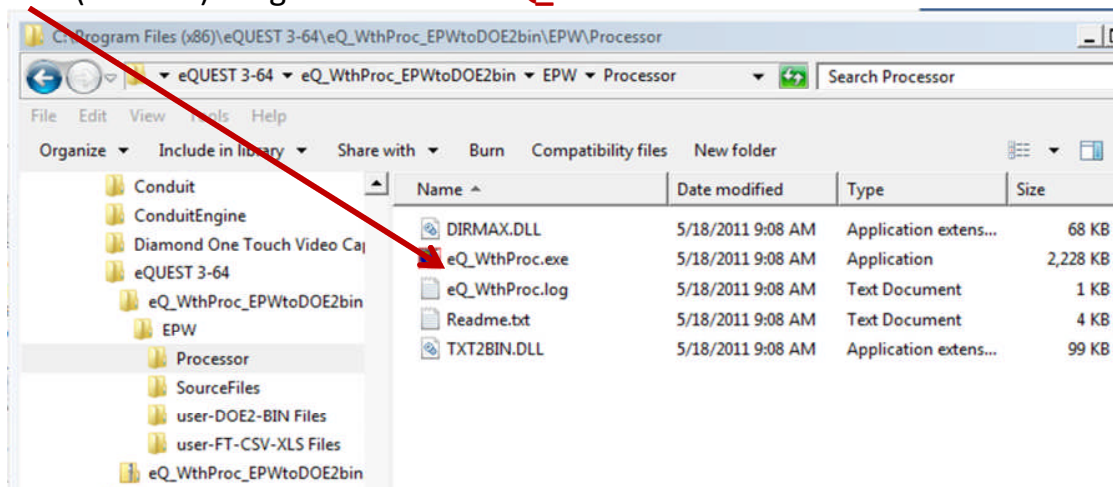
(These folders are for organizing the files generated by the program which **by default** will be saved in the **EPW\Processor** folder

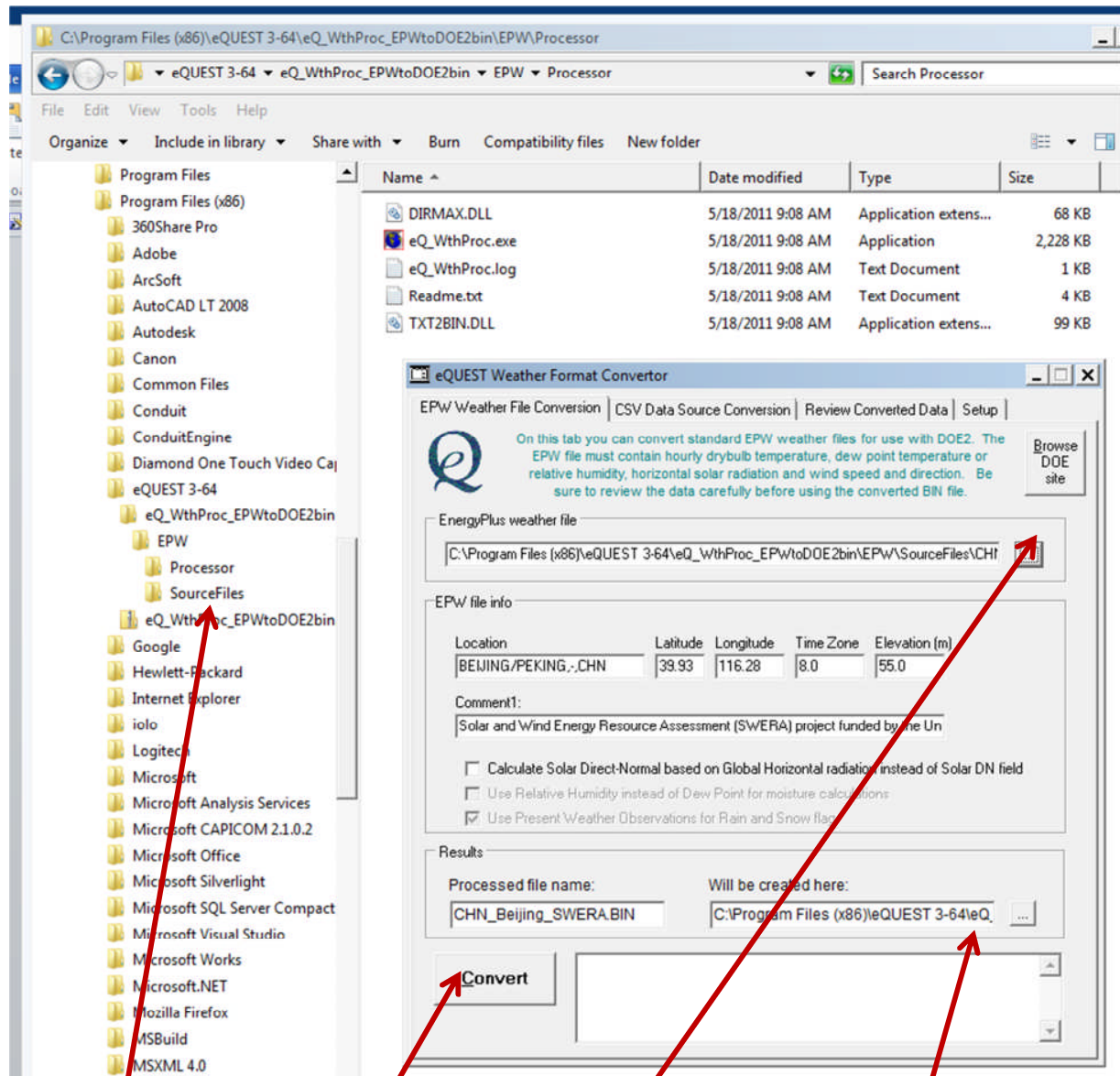


Run Weather Processor

Open Folder **Processor**

Run (Click on) Program in Folder **eQ_WthProc.exe**





Save All Source EPW Files in Folder **EPW\SourceFiles**

Open Sample File **CHN_Beijing_SWERA.epw** in this Window

Convert (click here to run program)

Save BIN file in Folder **EPW\user-DOE2-BIN**

Creates File BIN File **CHN_Beijing_SWERA.BIN**

Cut & Paste *FT, *CSV, & *XLS Files created in Folder **EPW\Processor**

To Folder **EPW\user-FT-CSV-XLS\Beijing**

Download EPW Files EnergyPlus Websites

http://apps1.eere.energy.gov/buildings/energyplus/cfm/weather_data.cfm

Weather Data

Weather data for more than 2100 locations are now available in EnergyPlus weather format. The original source is the National Weather Service (NWS) Climate Data Online (CDO) archive. The data is organized by region and country.

- Africa (WMO Region 1)
- Asia (WMO Region 2)
- South America (WMO Region 3)
- North and Central America (WMO Region 4)
- Southwest Pacific (WMO Region 5)
- Europe (WMO Region 6)
- Antarctica (WMO Region 7)

View and download EnergyPlus weather data directly using the links below.

Weather Data

All Regions : North and Central America

North America

USA

California Climate Zones

Canada

Central America

CUB - Cuba

GTM - Guatemala

HND - Honduras

MEX - Mexico

MTQ - Martinique

NIC - Nicaragua

PRI - Puerto Rico

SLV - El Salvador

VIR - Virgin Islands (U.S.)

Weather Data

Weather data for USA are available below in EnergyPlus weather format. The original source is the National Weather Service (NWS) Climate Data Online (CDO) archive. The data is organized by region and country.

All Regions : North and Central America WMO Region 4 : US

AK AL AR AZ CA CO CT DE FL GA HI IA ID IL IN KS KY LA MA MD ME MI MN MO MS MT NC ND NE NH NJ NM NV NY OH OK OR PA RI SC SD TN TX UT VA VT WA WI WV WY

Alaska		
Adak NAS 704540 (TMY3)	EPW	STAT
Ambler 701718 (TMY3)	EPW	STAT
Anaktuvuk Pass 701625 (TMY3)	EPW	STAT
Anchorage-Elmendorf AFB 702720 (TMY3)	EPW	STAT
Anchorage-Lake Hood Seaplane Base 702725 (TMY3)	EPW	STAT
Anchorage-Merrill Field 702735 (TMY3)	EPW	STAT
Anchorage Intl AP 702730 (TMY3)	EPW	STAT

Select Region Country Location

http://tech.groups.yahoo.com/group/EnergyPlus_Support/files/Meteoromnorm_Weather_Files/

EnergyPlus_Support - EnergyPlus Support

Files

Files > Meteoromnorm_Weather_Files

Name

- Africa WMO Region 1
- Antarctica (ATA) WMO Region 7
- Asia WMO Region 2
- Europe WMO Region 6
- North and Central America and Caribbean WMO Region 4
- South America WMO Region 3
- South-West Pacific WMO Region 5

GROUPS

Files > Meteoromnorm_Weather_Files > Europe

Name

- Austria (AUT)
- Bulgaria (BGR)
- Croatia (Hrvatska HRV)
- Estonia (EST)
- France (FRA)
- Germany (DEU)

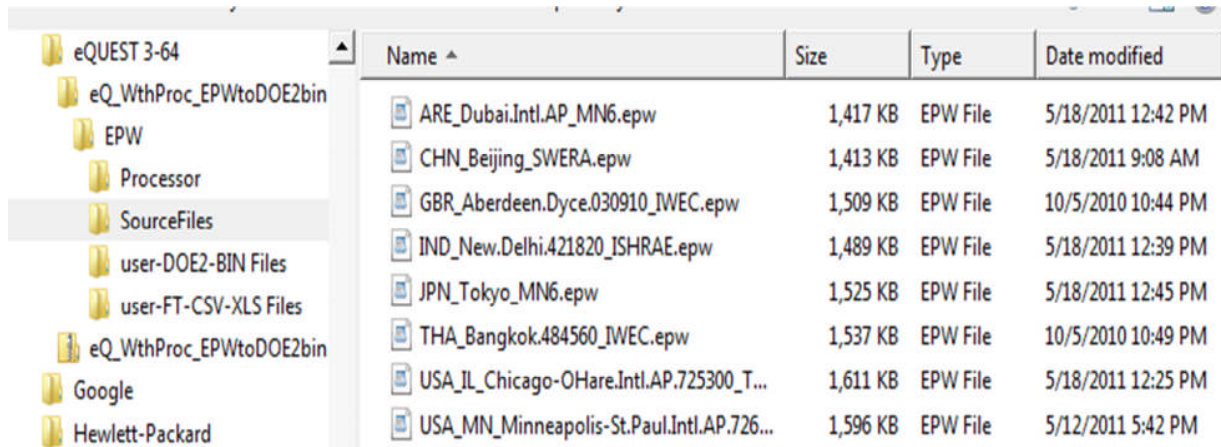
GROUPS

Files > Meteoromnorm_Weather_Files > Europe > France (FRA)

Name

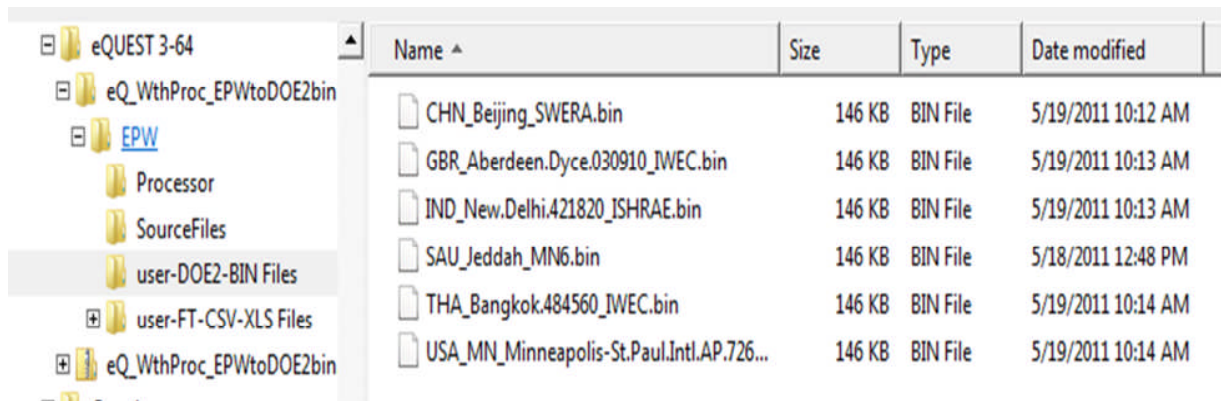
Size

- FRA_Bastia-Poretta.Corsica_MN6.zip 241 KB
- FRA_Caen_MN6.zip 239 KB
- FRA_Croque_MN6.zip 238 KB
- FRA_Loudenvielle_MN6.zip 231 KB
- FRA_Paris-Montsouris_MN6.zip 234 KB



Name	Size	Type	Date modified
ARE_Dubai.Intl.AP_MN6.epw	1,417 KB	EPW File	5/18/2011 12:42 PM
CHN_Beijing_SWERA.epw	1,413 KB	EPW File	5/18/2011 9:08 AM
GBR_Aberdeen.Dyce.030910_IWEC.epw	1,509 KB	EPW File	10/5/2010 10:44 PM
IND_New.Delhi.421820_JSHRAE.epw	1,489 KB	EPW File	5/18/2011 12:39 PM
JPN_Tokyo_MN6.epw	1,525 KB	EPW File	5/18/2011 12:45 PM
THA_Bangkok.484560_IWEC.epw	1,537 KB	EPW File	10/5/2010 10:49 PM
USA_IL_Chicago-OHare.Intl.AP.725300_T...	1,611 KB	EPW File	5/18/2011 12:25 PM
USA_MN_Minneapolis-St.Paul.Intl.AP.726...	1,596 KB	EPW File	5/12/2011 5:42 PM

Folder with EPW Source Files – C:\Program Files (x86)\eQUEST 3-64\EPW\SourceFiles



Name	Size	Type	Date modified
CHN_Beijing_SWERA.bin	146 KB	BIN File	5/19/2011 10:12 AM
GBR_Aberdeen.Dyce.030910_IWEC.bin	146 KB	BIN File	5/19/2011 10:13 AM
IND_New.Delhi.421820_JSHRAE.bin	146 KB	BIN File	5/19/2011 10:13 AM
SAU_Jeddah_MN6.bin	146 KB	BIN File	5/18/2011 12:48 PM
THA_Bangkok.484560_IWEC.bin	146 KB	BIN File	5/19/2011 10:14 AM
USA_MN_Minneapolis-St.Paul.Intl.AP.726...	146 KB	BIN File	5/19/2011 10:14 AM

Folder with DOE2 BIN Files - C:\Program Files (x86)\eQUEST 3-64\EPW\user-DOE2-BIN Files

Weather (Minneapolis) Chart created by **eQ_WthProc.exe**

